

LC1 LENSES FOR CREE XR-E LEDs



- Specially designed for Cree XLAMP XR-E series of LEDs.
- Special care taken to make a uniform white or warm white illumination.
- Lens material optical grade PMMA with high UV and temperature resistance (105°C/220°F). Allows use of high current and temperature conditions. Holder material ABS.
- Best available optical efficiency, more than 90%, with an extremely good cutoff of light
- Fastening of holder to PCB with appropriate adhesive, e.c. epoxy or polyurethane based. NOTE: DO NOT USE SUPERGLUE.
- Please check fastening details from this link:
(http://www.ledil.com/datasheets/DataSheet_GLUES.pdf)

LENS TYPES

NAME	ORDERING CODE	FWHM Angle
LC1 REAL SPOT	FA10808 LC1-RS	±3°
LC1 DIFFUSER	FA10810 LC1-D	±5°
LC1 MEDIUM /DIFFUSER	FA11372 LC1-MD	±12°
LC1 MEDIUM	FA10807 LC1-M	±14°
LC1 MEDIUM2	FA11459 LC1-M2	Coming soon
LC1 OVAL	FA11104 LC1-O-90	±5° x ±21°
LC1 RECTANGULAR	FA10809 LC1-REC	±21° x ±11°

NOTE: DELIVERED UNASSEMBLED

© Ledil Oy – PRELIMINARY - Subject to change without prior notice

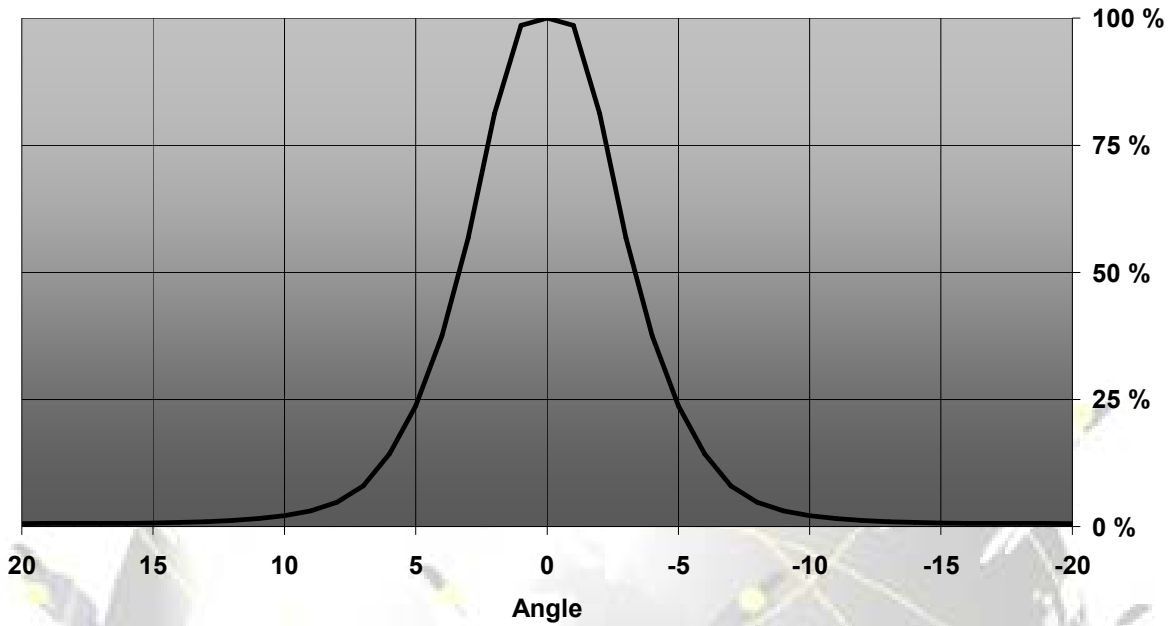
Ledil Oy
Tehdaskatu 13
FIN-24100 SALO, Finland

www.ledil.com
email: ledil@ledil.com
FAX: +358-2-733 8001

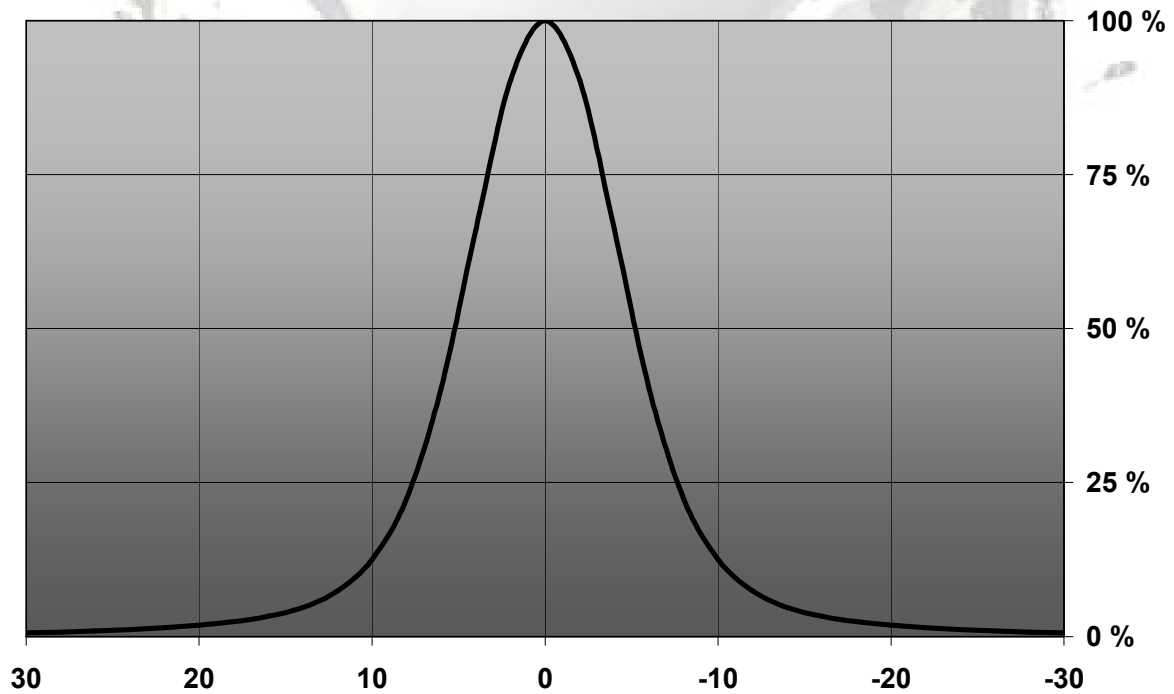
2010-08-02

MEASUREMENT DATA

Relative Intensity LC1-RS

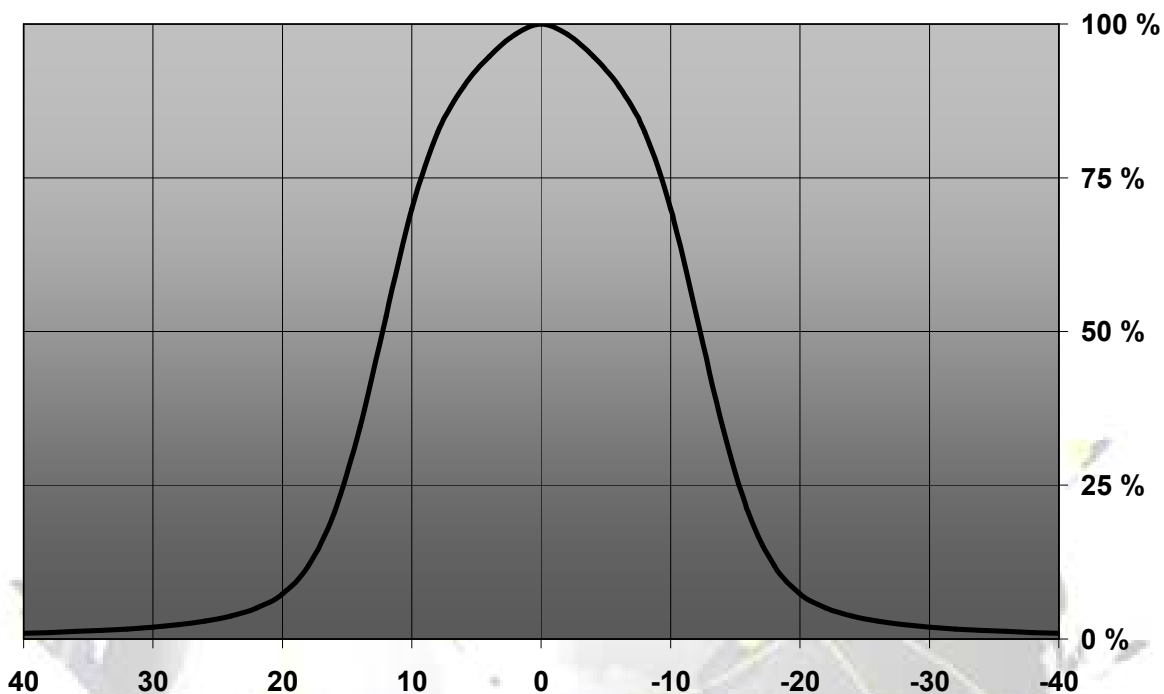


Relative Intensity of FA10810_LC1-D

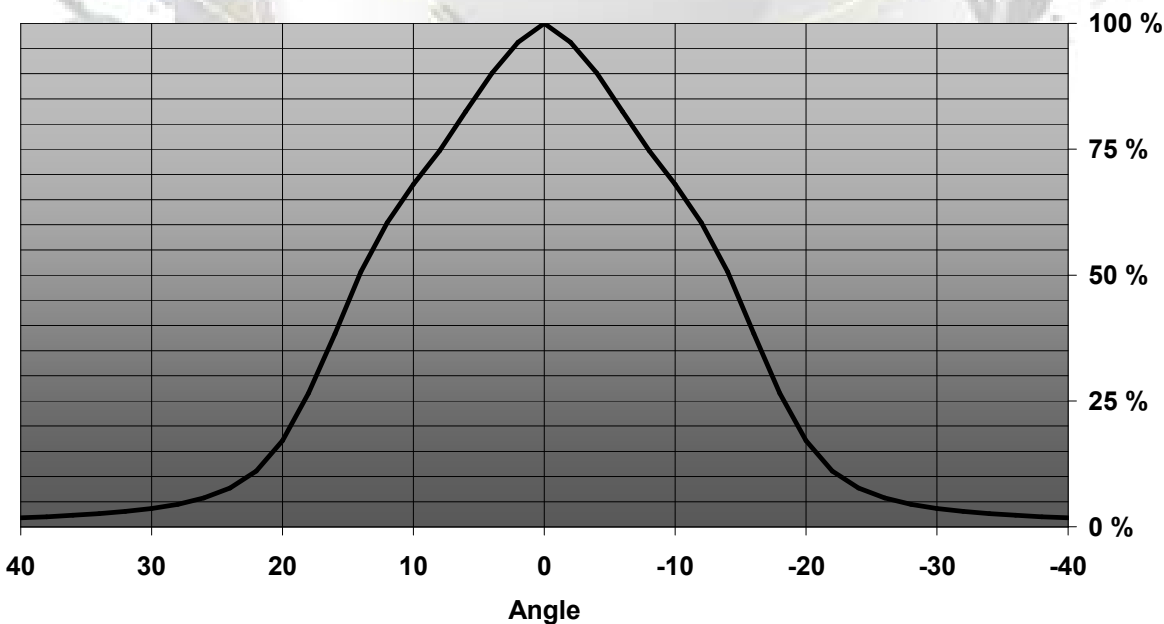


© Ledil Oy – PRELIMINARY - Subject to change without prior notice

Relative Intensity of FA11373_LC1-MD-Tape

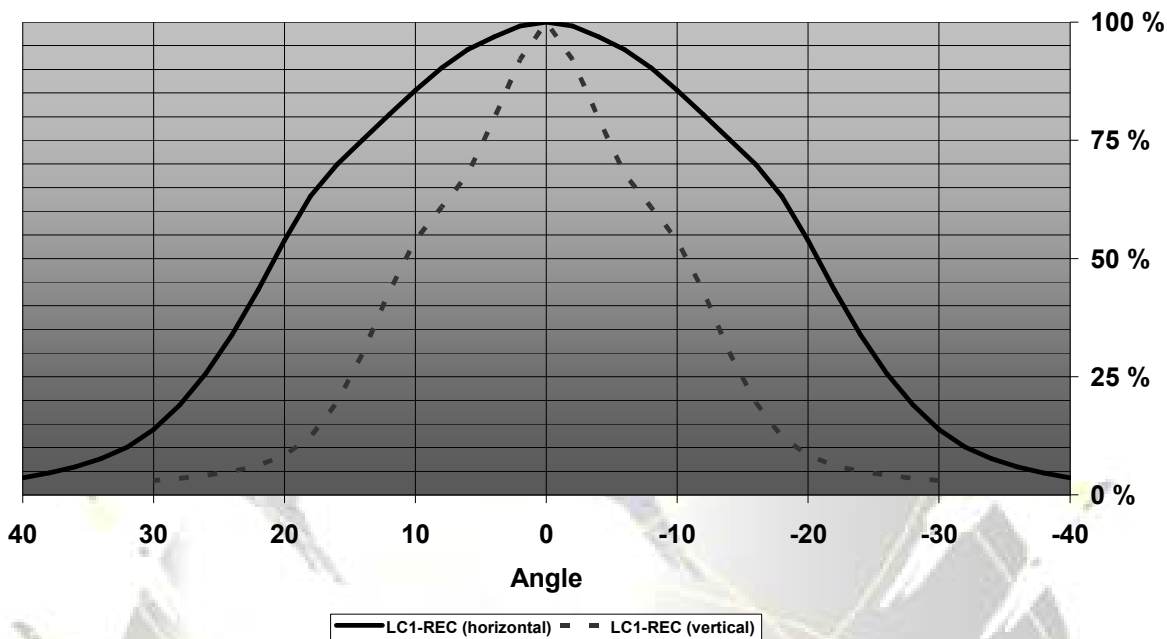


Relative Intensity of LC1-M



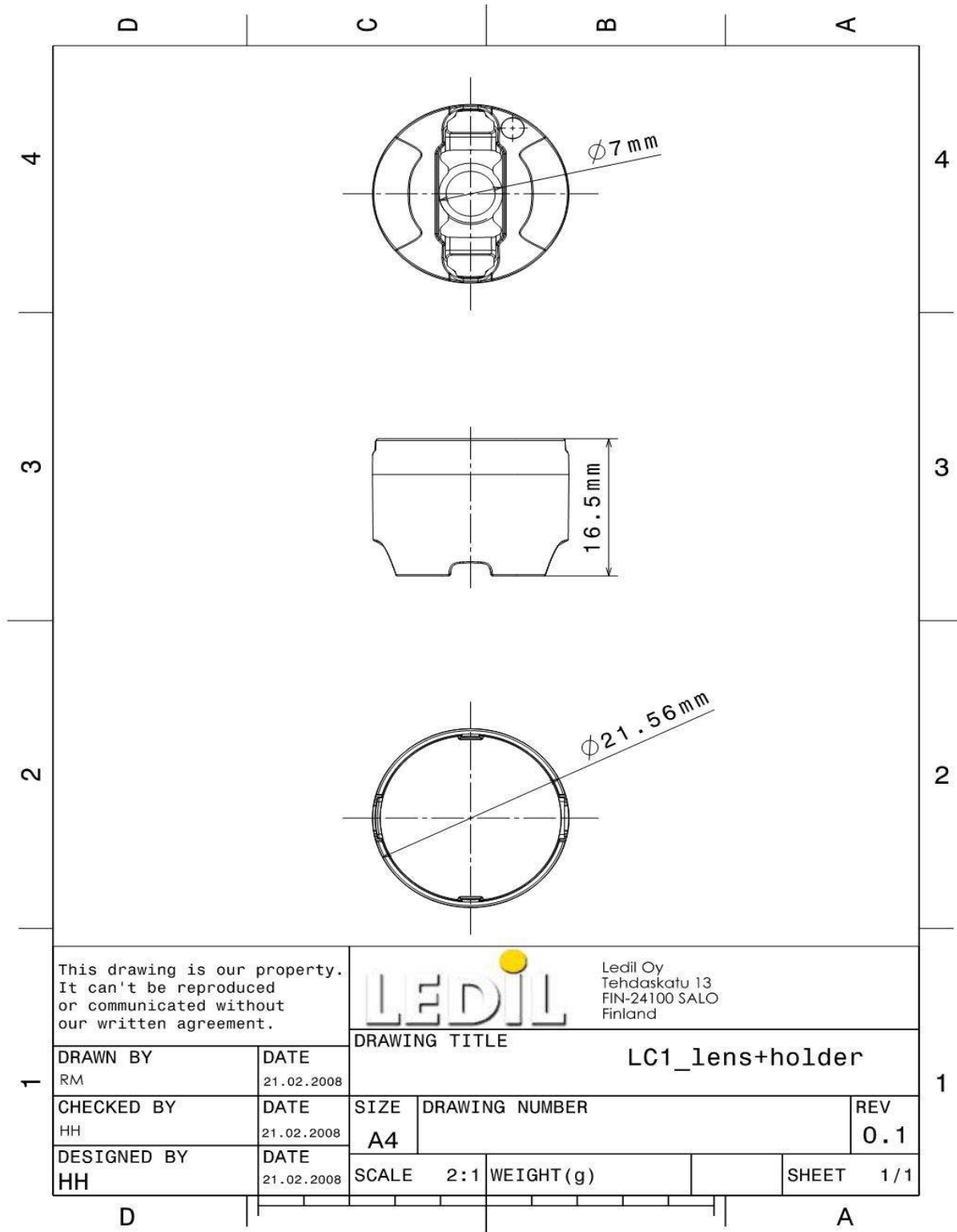
© Ledil Oy – PRELIMINARY - Subject to change without prior notice

Relative Intensity of LC1-REC



EULUMDAT & IES FILES AVAILABLE BY REQUEST

DRAWINGS



© Ledil Oy - PRELIMINARY - Subject to change without prior notice