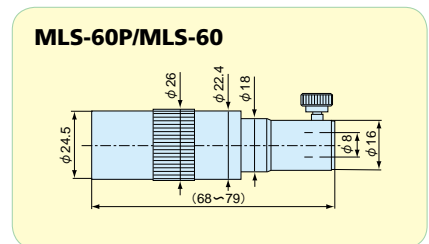
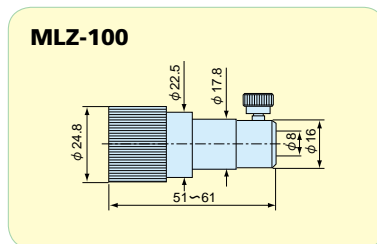
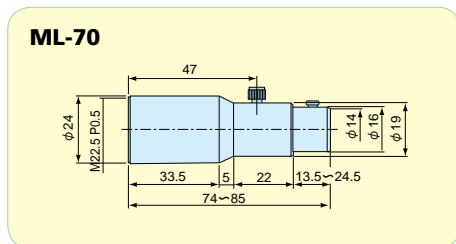
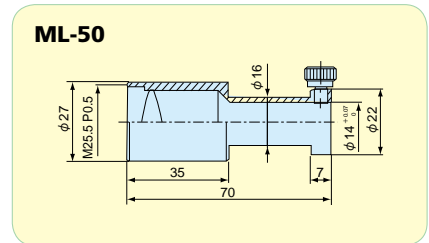
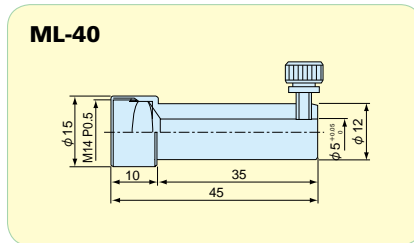
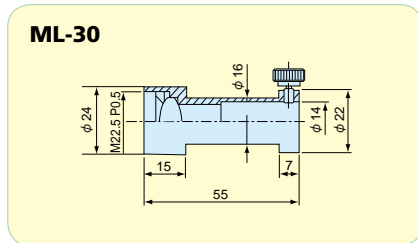


For Straight/ Bifurcated/ Multifurcated Light Guides

Condenser Lenses

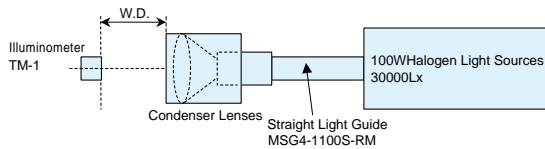


These high performance condenser lenses were uniquely developed by Moritex for optical fiber light guides. Through careful design and production, Moritex ensures high quality performance at reasonable cost.



■ Illuminance Characteristic and Illumination Range of Condenser Lenses

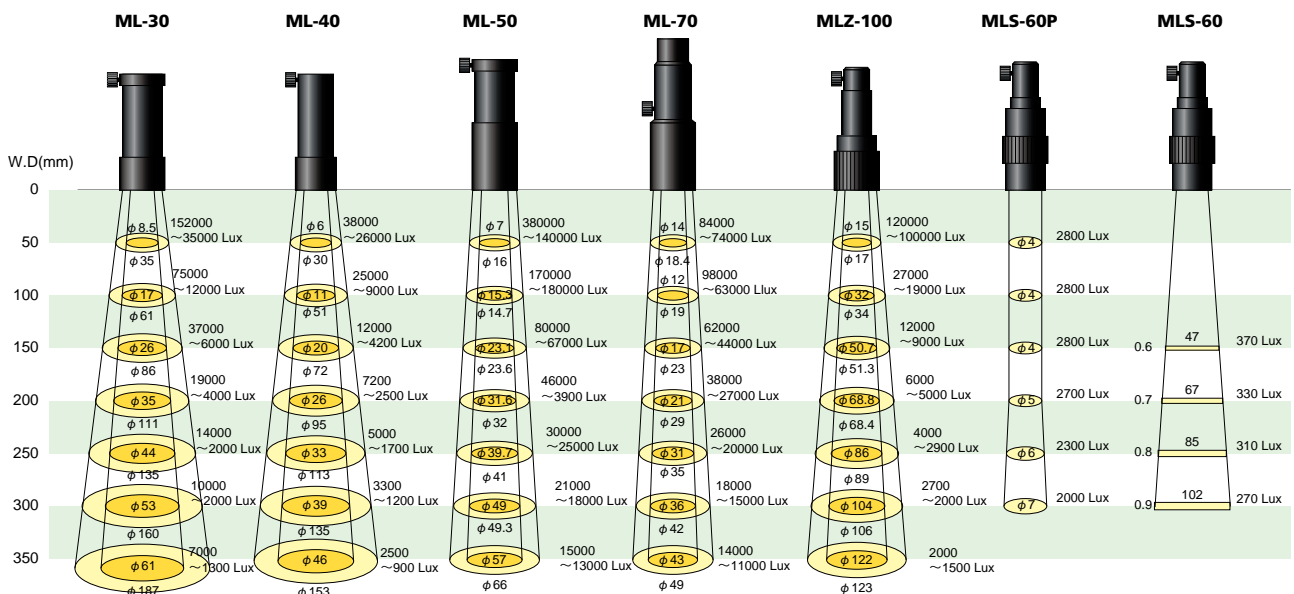
Central Illuminance



Model	Key Features	Product Code
ML-30	For straight or 2-branch light guides	A-8300
ML-40	For small diameter type (-SD)	A-8301
ML-50	Provides almost double the illuminance of the ML-30	A-8302
ML-70	For two lenses of two groups. Condenses into A uniform, comparatively small spot beam.	A-8303
MLZ-100	Uniform spot beam with each working distance. Adjustable focus function by helicoid.	A-8304
MLS-60P	Fine spot beam, focused by helicoid. Adjustable focus function by helicoid.	A-8306
MLS-60	Uniform and sharp slit beam, focused by helicoid. Adjustable focus function by helicoid.	A-8305

Measuring Method:

Position the illuminometer visually at the center of the illumination range (narrow or wide) and measure the illuminance. Set the illuminance of the light source to 30,000Lx for standard measurement (measurement using the standard light guide and measuring instrument). If the illuminance of the light source set to 30,000Lx exceeds 99,900Lx (upper limit of the measuring instrument) in standard measurement, reduce the luminous energy to the measurable range and convert the value into the range of 30,000Lx later.



■ Light source: 100W halogen light source (volume: max)
 ■ Fiber: MSG4-1100S-RM for ML-30, ML-50, ML-70, MLZ-100, and MLS-60/60P
 MSG3-1100S-SD for ML-40



Light Guide Options